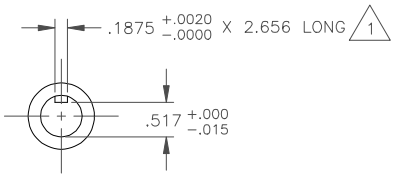
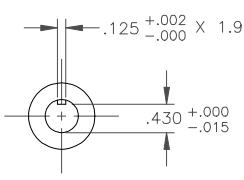
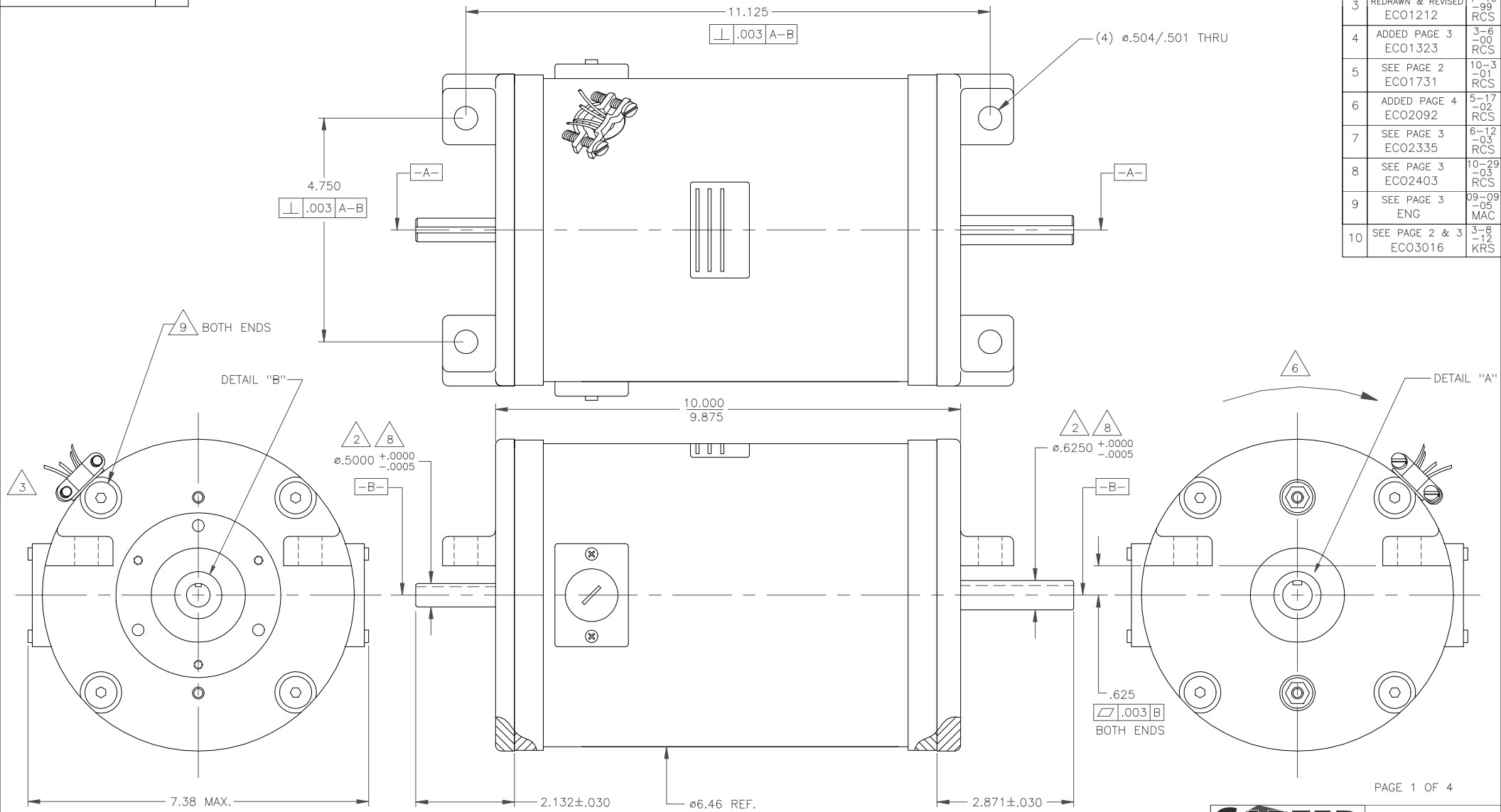


ISS.	REVISION	DATE
3	REDRAWN & REVISED ECO1212	7-19-99 RCS
4	ADDED PAGE 3 ECO1323	3-6-00 RCS
5	SEE PAGE 2 ECO1731	10-3-01 RCS
6	ADDED PAGE 4 ECO2092	5-17-02 RCS
7	SEE PAGE 3 ECO2335	6-12-03 RCS
8	SEE PAGE 3 ECO2403	10-29-03 RCS
9	SEE PAGE 3 ENG	09-09-05 MAC
10	SEE PAGE 2 & 3 ECO3016	3-8-12 KRS



SAFETRAN (230 V)



CARTER MOTOR CO.
400 S. Railroad St.
WARREN, IL 61087

THIS DRAWING COVERS A PROPRIETARY ITEM AND IS THE PROPERTY OF CARTER MOTOR CO. THIS DRAWING IS NOT TO BE COPIED OR USED WITHOUT APPROVAL OF CARTER MOTOR CO.

TOLERANCES UNLESS OTHERWISE SPECIFIED		MAT'L:
DECIMAL DIMS		RELEASE NO: ECO1118
TWO PLACE X.XX =	±.01	REPLACES:
THREE PLACE X.XXX =	±.005	SCALE: NONE
FRACTIONS =	±.015	
ANGLES =	±1°	

DO NOT SCALE DRAWING—WORK TO DIMENSIONS SHOWN

TITLE: MOTOR, UNIVERSAL	
DWN: RCS	DATE: 3-24-99
CHKD: RFA	DATE: 3-26-99
MFG: KEG	DATE: 3-29-99
APPD: RFA	DATE: 4-1-99
CARTER NUMBER	6630-4071-0004